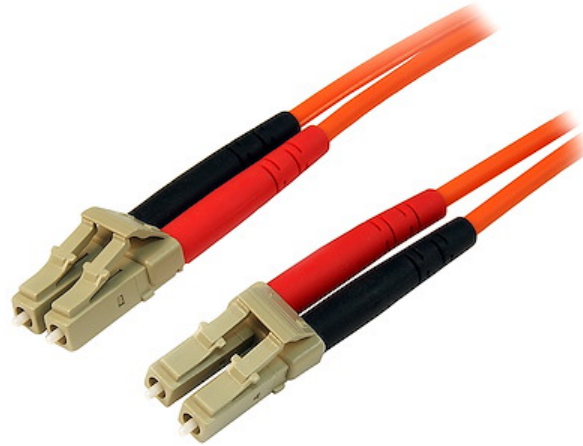


Fiber Optic Cable - Multimode Duplex 50/125 - LSZH - LC/LC - 30 m

**Product ID:** 50FIBLCLC30



The 50FIBLCLC30 30m LSZH LC to LC Fiber Cable features 50/125 micron fiber for high-speed, high bandwidth data transmissions over Gigabit Ethernet and Fiber Channel networks, with support for duplex multimode applications.

This LC-LC patch cable is housed in a LSZH (Low-Smoke, Zero-Halogen) flame retardant jacket, to ensure minimal smoke, toxicity and corrosion when exposed to high sources of heat, in the event of a fire. Making it ideal for use in industrial settings, central offices and schools, as well as residential settings where building codes are a consideration.

Each Duplex 50/125 (OM2) Multimode Fiber Patch Cable is individually tested and certified to be within acceptable optical insertion loss limits for guaranteed compatibility and 100% reliability and is backed by our lifetime warranty.

## Certifications, Reports and Compatibility

### Applications

- Ideal solution for data applications requiring high speed data transmission
- Broadband systems
- Telecommunication / Data communication
- Used by long distance networks with mission critical data

### Features

- Immune to electrical interference

- OM2 (50/125) 500MHz multimode fiber
- LSZH (Low-Smoke, Zero-Halogen) cable jacket
- Attenuation loss meets or exceeds industry standards

---

#### Prominence

Warranty	Lifetime
Description CDW 75 - 1st Line	StarTech.com 30m Fiber Optic Cable - Multimode Duplex 50/125 - LSZH - LC/LC

---

#### Hardware

Fire Rating	LSZH Rated (Low Smoke Zero Halogen)
Fiber Size	50/125

---

#### Performance

Maximum Data Transfer Rate	10Gbps
Cable Rating	1Gbps / 10Gbps
Fiber Classification	OM2
Type	Multi Mode

---

#### Connector(s)

Connector A	Fiber Optic LC Duplex
Connector B	Fiber Optic LC Duplex

---

#### Environmental

Operating Temperature	-20C to 60C (-4F to 140F)
Storage Temperature	-20C to 60C (-4F to 140F)
Humidity	0~90% RH

---

#### Physical Characteristics

Color	Orange
Cable Length	98.4 ft [30 m]
Product Length	98.4 ft [30.0 m]



Product Width	0.0 in [0.0 mm]
Product Height	0.0 in [0.0 mm]
Weight of Product	13.4 oz [380.0 g]

---

**Packaging Information**

Package Length	12.8 in [32.5 cm]
Package Width	1.6 in [40.0 mm]
Package Height	9.8 in [25.0 cm]
Shipping (Package) Weight	13.7 oz [388.0 g]

---

**What's in the Box**

Included in Package	30m Multimode 50/125 Duplex Fiber Patch Cable LC – LC
---------------------	---

---

***\*Product appearance and specifications are subject to change without notice.***

