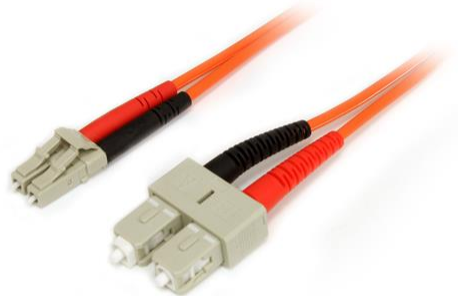


Fiber Optic Cable - Multimode Duplex 50/125 - LSZH - LC/SC - 1 m

Product ID: 50FIBLCSC1



The 50FIBLCSC1 1m LSZH LC to SC Fiber Cable features 50/125 micron fiber for high-speed, high bandwidth data transmissions over Gigabit Ethernet and Fiber Channel networks, with support for duplex multimode applications.

This LC-SC patch cable is housed in a LSZH (Low-Smoke, Zero-Halogen) flame retardant jacket, to ensure minimal smoke, toxicity and corrosion when exposed to high sources of heat, in the event of a fire. Making it ideal for use in industrial settings, central offices and schools, as well as residential settings where building codes are a consideration.

Each Duplex 50/125 (OM2) Multimode Fiber Patch Cable is individually tested and certified to be within acceptable optical insertion loss limits for guaranteed compatibility and 100% reliability and is backed by our lifetime warranty.

Certifications, Reports and Compatibility



Applications

- Used by long distance networks with mission critical data
- Telecommunication / Data communication
- Broadband systems
- Ideal solution for data applications requiring high speed data transmission

Features

- Immune to electrical interference
- OM2 (50/125) 500MHz multimode fiber
- LSZH (Low-Smoke, Zero-Halogen) cable jacket

- Attenuation loss meets or exceeds industry standards

Hardware	Warranty	Lifetime
	Fire Rating	LSZH Rated (Low Smoke Zero Halogen)
	Fiber Size	50/125
Performance	Maximum Data Transfer Rate	10Gbps 1Gbps / 10Gbps
	Cable Rating	OM2
	Fiber Classification	Multi Mode
	Type	
Connector(s)	Connector A	Fiber Optic LC Duplex
	Connector B	Fiber Optic SC Duplex
Environmental	Operating Temperature	-20C to 60C (-4F to 140F)
	Storage Temperature	-20C to 60C (-4F to 140F)
	Humidity	0~90% RH
Physical Characteristics	Color	Orange
	Cable Length	39.4 in [10 cm]
	Product Length	39.4 in [10.0 cm]
	Product Width	0.0 in [0.000 mm]
	Product Height	0.0 in [0.000 mm]
	Weight of Product	0.9 oz [26.000 g]
Packaging Information	Package Length	8.7 in [2.2 cm]
	Package Width	7.9 in [2.0 cm]
	Package Height	1.0 in [26.000 mm]
	Shipping (Package) Weight	1.2 oz [35.000 g]
What's in the Box	Included in Package	1m Multimode 50/125 Duplex Fiber Patch Cable LC - SC

**Product appearance and specifications are subject to change without notice.*