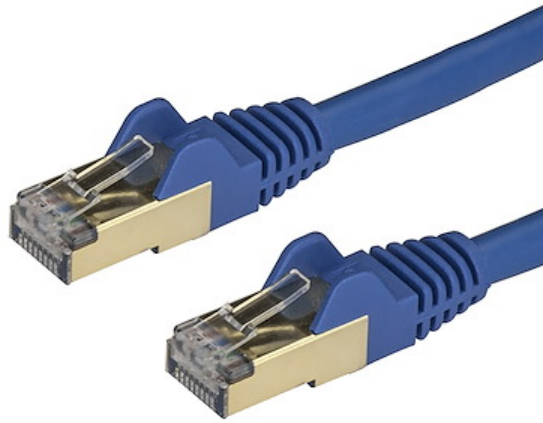


2m CAT6a Ethernet Cable - 10 Gigabit Shielded Snagless RJ45 100W PoE Patch Cord - 10GbE STP Network Cable w/Strain Relief - Blue Fluke Tested/Wiring is UL Certified/TIA

Product ID: 6ASPAT2MBL



This Cat6a cable meets or exceeds all Category 6a cable specifications to ensure reliable 10Gb network connections. The cable is shielded to protect your network against electromagnetic interference (EMI/RFI) and system noise, providing the perfect solution for fast and safe network connections.

This 2-meter blue patch cable is perfect for standard applications such as connecting from a wall jack to your laptop docking station or desktop computer.

For easier network installations, our Cat6a patch cables are available in a wide variety of lengths and colors. This ensures you have the right size of cable available when you need it and it lets you color code your connections for a more organized setup.

Each cable is tested for up to 500MHz frequency and is more than suitable for 10GBase-T Ethernet networks.

Constructed with 100% copper and foil-shielded, twisted-pair wiring, this cable was built for quality performance. The cable is designed to keep the data signals traveling through your network free from interference and is perfect in environments that are prone to large amounts of EMI.

The 50-micron gold connectors deliver optimum conductivity and eliminate signal loss due to oxidation or corrosion.

For trouble-free cable runs, this durable cable features snagless connectors that protect the RJ45 clips during installation, making them less likely to snag or break.

The cable also features molded boots which offer connector strain relief by stopping the RJ45 connector termination points from bending at sharp angles. This reduces the risk of damage to the cable, which could decrease network connectivity and performance.

The 6ASPAT2MBL is backed by StarTech.com's lifetime warranty for guaranteed reliability.

Certifications, Reports and Compatibility

Applications

- Connect PoE-enabled devices to 10Gb networks
- Connect servers to a Storage Area Network (SAN)
- Deliver data, voice and video over 10 Gigabit networks
- Connect between computers, hubs, switches, routers, print servers and patch panels

Features

- **HIGH PERFORMANCE CAT6A ETHERNET CABLE:** 100% copper for consistent & error-free 10 gigabit connection. Fluke tested complies with ANSI/TIA-568-D Category 6 requirements; ETL Certified Wiring
- **PROTECT YOUR NETWORK:** Shielded RJ45 connectors minimize Near-End Crosstalk (NEXT) & protect against noise & electromagnetic (EMI/RFI) interference compatible w/ multi-speed 10Base-T/NBASE-T generation
- **SPECS:** 10 GbE Length: 2 m (7 ft) Color: Blue Structure: 4 Pair STP Connector: Snagless Jacket Type: PVC Wire Gauge: 26 AWG Copper Wiring Standard: ANSI/TIA-568-D Warranty: Lifetime
- **POE SUPPORT:** 26 AWG stranded copper conductors & UL Rated Wiring (E132276-A) supports up to 100W for PoE devices like VOIP phone & security systems. IEEE 802.3bt & DTE power compliant prevents cable heating up
- **QUALITY CONSTRUCTION:** 50-micron gold-plated connectors for clear signal & to stop rust/corrosion. Snagless connector enables easy installation & flexible disconnection of patch cord in wiring conduits

Prominence

Warranty	Lifetime
Description CDW 75 - 1st Line	StarTech.com 2 m CAT6a Ethernet Cable - 10GbE STP Snagless 100W PoE Blue

Hardware

Cable Structure	Foiled with Foiled Twisted Pairs (F/FTP)
Number of Conductors	4 Pair STP
Cable Jacket Material	PVC - Polyvinyl Chloride
Cable Shield Material	Aluminum-polyester foil
Fire Rating	CMG Rated (General Purpose)
Cable Type	Shielded Snag-less

Performance

Cable Rating	CAT6a - 10Gbit/s
--------------	------------------

Connector(s)

Connector A	RJ-45
-------------	-------

Connector B	RJ-45
-------------	-------

Physical Characteristics

Color	Blue
-------	------

Cable Outer Diameter	6.30.20mm
----------------------	-----------

Wire Gauge	25 AWG (0.455 mm)
------------	-------------------

Conductor Type	Stranded Copper
----------------	-----------------

Cable Length	6.6 ft [2 m]
--------------	--------------

Product Length	6.6 ft [2 m]
----------------	--------------

Weight of Product	3.1 oz [88 g]
-------------------	---------------

Packaging Information

Package Length	8.7 in [22 cm]
----------------	----------------

Package Width	7.9 in [20 cm]
---------------	----------------

Package Height	0.6 in [15 mm]
----------------	----------------

Shipping (Package) Weight	3.5 oz [98 g]
---------------------------	---------------

What's in the Box

Included in Package	Cat6a patch cable
---------------------	-------------------

****Product appearance and specifications are subject to change without notice.***

