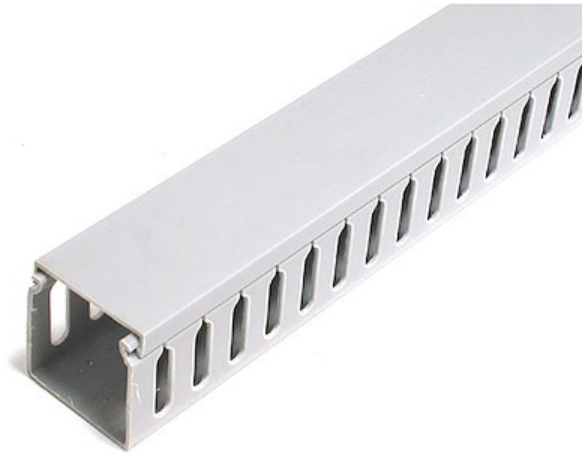


2x2in Open Slot Wiring Cable Raceway Duct with Cover

Product ID: AD2X2



This two-piece plastic wiring duct provides a protective channel for cables, letting you route cables more neatly and in turn prevent the mess and confusion of tangled cables.

The duct/raceway can be screwmounted, and features parallel openings along the length of the duct and a snap-lid design that provides easy access to cables while maintaining a tidy, organized appearance.

Certifications, Reports and Compatibility

Applications

- Screws into wall to provide a protective channel for cables
- Snap-lid provides easy access to cables and gives a tidy appearance

Features

- Parallel openings on both sidewalls facilitates customization
- Benefits of PVC material: high impact resistance, warp-proof, and self-extinguishing

Special Notes / Requirements

Warranty	2 Years
Note	Cable Capacity 80-90 pcs

Environmental

Operating Temperature	85C (185F) Max
-----------------------	----------------

Physical Characteristics

Color	Gray
Materials	Polyvinyl Chloride (PVC)
Product Length	5.6 ft [1.7 m]
Product Width	2.0 in [50.0 mm]
Product Height	2.0 in [50.0 mm]
Weight of Product	24.7 oz [700.0 g]

Packaging Information

Package Length	5.6 ft [1.7 m]
Package Width	2.0 in [50.0 mm]
Package Height	2.0 in [50.0 mm]
Shipping (Package) Weight	29.7 oz [840.0 g]

What's in the Box

Included in Package	2 x 2 inch Open Slot Wiring Duct w. Lid
---------------------	---

****Product appearance and specifications are subject to change without notice.***

