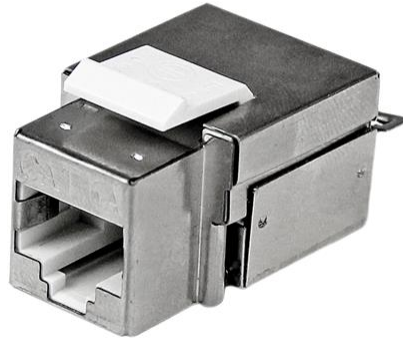


## Shielded Cat 6a Keystone Jack - RJ45 Ethernet Cat6a Wall Jack White - 110 Type

Product ID: C6AKEY110WH



The C6AKEY110WH Cat 6a Keystone Jack is designed to snap into wall plates, patch panels, and surface connection boxes for quick, seamless deployment.

Meeting and exceeding the international standard ISO / IEC 11801 and the ANSI/TIA-568-C.2 requirements, this RJ45 keystone jack provides the perfect solution for your Ethernet networks.

Durably constructed of only top quality materials, this Cat6a wall jack is backed by StarTech.com's 2 year warranty.

### Certifications, Reports and Compatibility



### Applications

- Suitable for applications that use 23-26 AWG solid state and stranded network cables
- 1000BASE-Tx Gigabit Ethernet, 100BASE-TX Fast Ethernet, 10BASE-T Ethernet applications
- ATM-25/ATM-51/ATM-155 network connections
- TR-4/TR-16 Active/TR16 Passive network connections
- 100 VG-AnyLan network connections

### Features

- Flame retardant (UL 94V0) plastic housing
  - Color coded for both T568A and T568B installations
  - Supports Cat6a Network Bandwidths of 500MHz
  - Meets and exceeds the international standard ISO / IEC 11801 and the ANSI/TIA-568-C.2 requirements
-

<b>Connector(s)</b>	Warranty	2 Years
	Connector Type(s)	RJ-45

---

<b>Physical Characteristics</b>	Color	White
	Product Length	1.5 in [38.100 mm]
	Product Width	0.8 in [21.000 mm]
	Product Height	0.6 in [16.000 mm]
	Weight of Product	0.4 oz [11.000 g]

---

<b>Packaging Information</b>	Package Quantity	1
	Package Length	4.9 in [1.2 cm]
	Package Width	3.5 in [90.000 mm]
	Package Height	0.6 in [14.000 mm]
	Shipping (Package) Weight	0.5 oz [13.000 g]

---

<b>What's in the Box</b>	Included in Package	Shielded Cat 6a RJ45 Keystone Jack White - 110 Type
--------------------------	---------------------	---

---

*\*Product appearance and specifications are subject to change without notice.*

