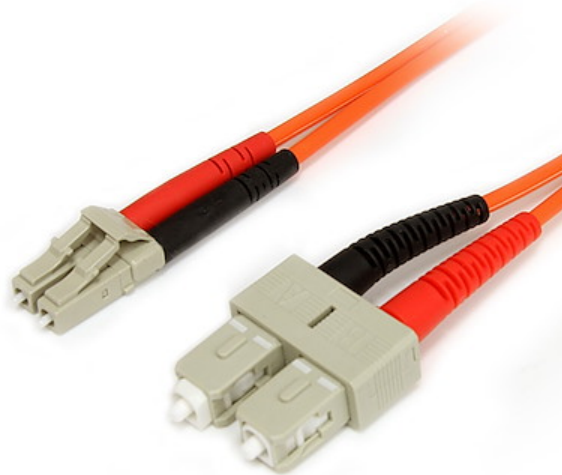


Fiber Optic Cable - Multimode Duplex 62.5/125 - LSZH - LC/SC - 1 m

Product ID: FIBLCSC1



The FIBLCSC1 1-meter (3.2ft) Multimode 62.5/125 Duplex Fiber Patch Cable is terminated with one LC (male) connector and one SC (male) connector, to provide the necessary connection between fiber networking devices for high-speed, long distance networks.

This LC-SC patch cable is housed in a LSZH (Low-Smoke, Zero-Halogen) flame retardant jacket, to ensure minimal smoke, toxicity and corrosion when exposed to high sources of heat, in the event of a fire. Making it ideal for use in industrial settings, central offices and schools, as well as residential settings where building codes are a consideration.

To ensure optimum performance, our multimode fiber duplex cable is individually tested and certified to be within acceptable optical insertion loss limits for guaranteed compatibility and 100% reliability.

Backed by Lifetime Warranty, our LC-SC Multimode Fiber Patch cable is guaranteed to provide long-lasting dependability, and top quality performance.

Certifications, Reports and Compatibility



Applications

- Ideal solution for data applications requiring high speed data transmission
- Broadband systems
- Telecommunication/Data communication

- Used by long distance networks with mission critical data

Features

- Attenuation loss meets or exceeds industry standards
- LSZH (Low-Smoke, Zero-Halogen) cable jacket
- Immune to electrical interference

Hardware

| | |
|-------------|-------------------------------------|
| Warranty | Lifetime |
| Fire Rating | LSZH Rated (Low Smoke Zero Halogen) |
| Fiber Size | 62.5/125 |

Performance

| | |
|----------------------------|----------------|
| Maximum Data Transfer Rate | 10Gbps |
| Cable Rating | 1Gbps / 10Gbps |
| Fiber Classification | OM1 |
| Type | Multi Mode |

Connector(s)

| | |
|-------------|---------------------------|
| Connector A | 1 - Fiber Optic LC Duplex |
| Connector B | 1 - Fiber Optic SC Duplex |

Environmental

| | |
|-----------------------|---------------------------|
| Operating Temperature | -20C to 60C (-4F to 140F) |
| Storage Temperature | -20C to 60C (-4F to 140F) |
| Humidity | 0~90% RH |

Physical Characteristics

| | |
|----------------|----------------|
| Color | Orange |
| Cable Length | 3.3 ft [1 m] |
| Product Length | 3.3 ft [1.0 m] |

| | |
|-------------------|-----------------|
| Product Width | 0.0 in [0.0 cm] |
| Product Height | 0.0 in [0.0 cm] |
| Weight of Product | 0.9 oz [26.0 g] |

Packaging Information

| | |
|---------------------------|------------------|
| Package Quantity | 1 |
| Package Length | 8.7 in [22.0 cm] |
| Package Width | 7.9 in [20.0 cm] |
| Package Height | 1.0 in [2.6 cm] |
| Shipping (Package) Weight | 1.2 oz [35.0 g] |

What's in the Box

| | |
|---------------------|--|
| Included in Package | 1 - 1m Multimode 62.5/125 Duplex Fiber Patch Cable LC - SC |
|---------------------|--|

****Product appearance and specifications are subject to change without notice.***