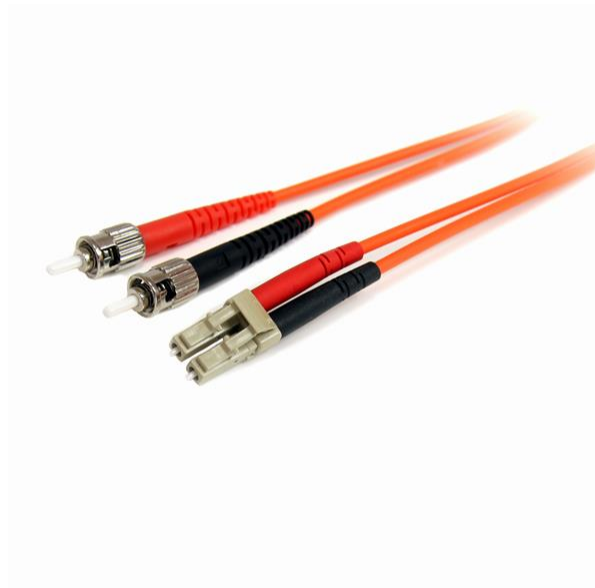


Fiber Optic Cable - Multimode Duplex 62.5/125 - LSZH - LC/ST - 1 m

Product ID: FIBLCST1



The FIBLCST1 1-meter (3.3ft) Multimode 62.5/125 Duplex Fiber Patch Cable is terminated with one LC (male) connector and one ST (male) connector, to provide the necessary connection between fiber networking devices for high-speed, long distance networks.

This LC-ST patch cable is housed in a LSZH (Low-Smoke, Zero-Halogen) flame retardant jacket, to ensure minimal smoke, toxicity and corrosion when exposed to high sources of heat, in the event of a fire. Making it ideal for use in industrial settings, central offices and schools, as well as residential settings where building codes are a consideration.

To ensure optimum performance, our multimode fiber duplex cable is individually tested and certified to be within acceptable optical insertion loss limits for guaranteed compatibility and 100% reliability.

Backed by Lifetime Warranty, our LC-ST Multimode Fiber Patch cable is guaranteed to provide long-lasting dependability, and top quality performance.

Certifications, Reports and Compatibility



Applications

- Used by long distance networks with mission critical data
- Telecommunication/Data communication
- Broadband systems
- Ideal solution for data applications requiring high speed data transmission

Features

- Attenuation loss meets or exceeds industry standards
- LSZH (Low-Smoke, Zero-Halogen) cable jacket
- Immune to electrical interference

Hardware	Warranty	Lifetime
	Fire Rating	LSZH Rated (Low Smoke Zero Halogen)
	Fiber Size	62.5/125
Performance	Maximum Data Transfer Rate	10Gbps 1Gbps / 10Gbps
	Cable Rating	OM1
	Fiber Classification	Multi Mode
	Type	
Connector(s)	Connector A	Fiber Optic LC Duplex
	Connector B	Fiber Optic ST Duplex
Environmental	Operating Temperature	-20C to 60C (-4F to 140F)
	Storage Temperature	-20C to 60C (-4F to 140F)
	Humidity	0~90% RH
Physical Characteristics	Color	Orange
	Cable Length	39.4 in [10 cm]
	Product Length	39.4 in [10.0 cm]
	Product Width	0.0 in [0.000 mm]
	Product Height	0.0 in [0.000 mm]
	Weight of Product	1.0 oz [27.000 g]
Packaging Information	Package Length	8.7 in [2.2 cm]
	Package Width	7.9 in [2.0 cm]
	Package Height	0.8 in [20.000 mm]
	Shipping (Package) Weight	1.3 oz [36.000 g]
What's in the Box	Included in Package	1m Multimode 62.5/125 Duplex Fiber Patch Cable LC - ST

****Product appearance and specifications are subject to change without notice.***

