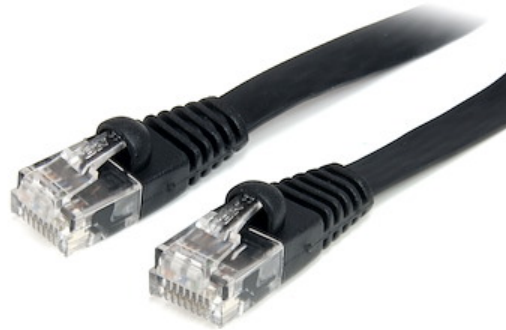


6 ft Black Flat Molded RJ45 UTP Cat 5e Patch Cable - 6ft Patch Cord

Productcode: FLAT45BK6



This compactly designed flat Cat5e cable offers the same performance of our regular Cat5 cables, and is specifically suited for installing in tight spaces.

This 6ft (flat) Cat5 UTP patch cable is constructed of only the highest quality materials, and is backed by our lifetime warranty.

Certificaties, rapporten en compatibiliteit

Toepassingen

- Connects workstation to wall outlet
- Patches from hub to distribution panel

Eigenschappen

- Thin, flat construction for increased flexibility
- StarTech Category 5e Patch cables are constructed with top quality components
- The Strain relief prevents the cable from being bent at sharp angles at the connector to minimize the stress at the plug termination point
- StarTech Category 5e patch cables are carefully constructed and tested, to keep the Near End Crosstalk (NEXT) well within acceptable limits

Hardware

Garantiebeleid	Lifetime
Aantal geleiders	4 Pair UTP
Type kabelmantel	PVC - Polyvinyl Chloride
Brandbestendigheid	CMG goedgekeurd (algemeen doel)
Type kabel	Plat Gegoten

Prestaties

Maximale kabellengte	328.0 ft [100 m]
----------------------	------------------

Connector(en)

Connector A	RJ-45
Connector B	RJ-45

Fysieke eigenschappen

Kleur	Zwart
Draaddikte	30 AWG
Kabellengte	6.0 ft [1.8 m]
Lengte product	6.0 ft [1.8 m]

Verpakkingsinformatie

Package Length	4.7 in [12 cm]
Package Width	0.5 in [12 mm]
Package Height	8.7 in [22 cm]
Verzendgewicht (verpakt)	1.4 oz [40 g]

Wat wordt er meegeleverd

Meegeleverd	6 ft Black Flat Molded Cat5e UTP Patch Cable
-------------	--



* Uitvoering en specificaties van het product zijn zonder aankondiging vatbaar voor wijzigingen.

