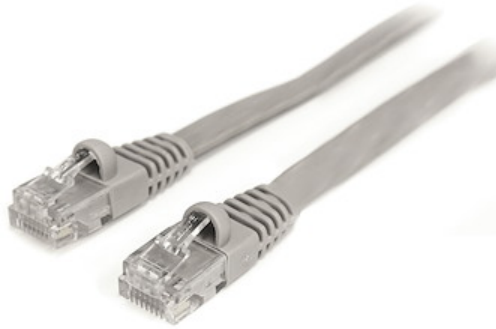


6 ft Gray Flat Molded RJ45 UTP Cat 5e Patch Cable - 6ft Patch Cord

Product ID: FLAT45GR6



This compactly designed flat Cat5e cable offers the same performance of our regular Cat5 cables, and is specifically suited for installing in tight spaces.

This 6ft (flat) Cat5 UTP patch cable is constructed of only the highest quality materials, and is backed by our lifetime warranty.

Certifications, Reports and Compatibility



Applications

- Connects workstation to wall outlet
- Patches from hub to distribution panel

Features

- Thin, flat construction for increased flexibility
- StarTech Category 5e Patch cables are constructed with top quality components
- The Strain relief prevents the cable from being bent at sharp angles at the connector to minimize the stress at the plug termination point

- StarTech Category 5e patch cables are carefully constructed and tested, to keep the Near End Crosstalk (NEXT) well within acceptable limits

Hardware

Warranty	Lifetime
Number of Conductors	4 Pair UTP
Cable Jacket Material	PVC - Polyvinyl Chloride
Fire Rating	CMG Rated (General Purpose)
Cable Type	Flat Molded

Performance

Maximum Cable Length	328.0 ft [100 m]
----------------------	------------------

Connector(s)

Connector A	1 - RJ-45
Connector B	1 - RJ-45

Physical Characteristics

Color	Gray
Wire Gauge	30 AWG
Cable Length	6.0 ft [1.8 m]
Product Length	6.0 ft [1.8 m]

Packaging Information

Package Quantity	1
Package Length	5.0 in [12.7 cm]
Package Width	0.6 in [14 mm]
Package Height	8.7 in [22 cm]
Shipping (Package) Weight	0.1 lb [0.0 kg]

What's in the Box

Included in Package	1 - 6 ft Gray Flat Cat 5e UTP Patch Cable
---------------------	---

**Warranty
Information**

Warranty

Lifetime

****Product appearance and specifications are subject to change without notice.***