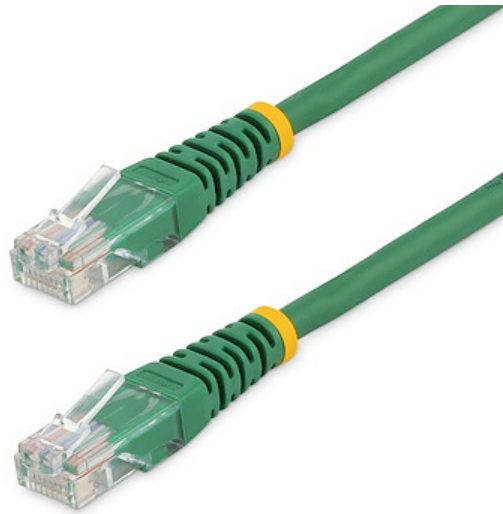


Cat5e Patch Cable with Molded RJ45 Connectors - 10 ft. - Green

Product ID: M45PATCH10GN



Get reliable Ethernet connectivity with this Cat5e Molded Patch Cable, designed to keep networks organized and running smoothly. Color-coded jacket options help simplify cable management and reduce identification errors, while molded strain relief protects connectors from damage during installation and daily use. Built with 100% copper conductors, 24 AWG wire, and 50-micron gold-plated connectors, it delivers consistent power and signal integrity for data and PoE applications.

Certifications, Reports and Compatibility



Applications

- Designed for use with Fast Ethernet networks
- Patches from hub to distribution panel
- Connects workstation to wall outlet

Features

- **HIGH PERFORMANCE CAT5E ETHERNET CABLE:** 100% copper for reliable Gigabit 1Gbps connections and 2.5/5Gbps (NBASE-T) over shorter distances; Complies with ANSI/TIA-568.2-D Category 5e
- **POE SUPPORT:** 24 AWG stranded copper conductors & UL Rated Wiring (E164469) supports up to 100W for PoE devices like VOIP phone & security systems; IEEE 802.3bt & DTE power compliance reduces cable heating

- **QUALITY CONSTRUCTION:** UL certified wire; 50-micron gold-plated connectors prevent rust/corrosion to avoid costly network downtime; High quality PVC jacket resists bending or fraying damage
- **EASY INSTALLATION:** Molded RJ45 patch cord for easy installation & flexible disconnection in wiring conduits; Compatible w/1GBASE-T & earlier standards; Snagless boot available for high-density setups
- **THE IT PRO'S CHOICE:** Designed for reliability in edge and on-prem deployments, our network cables are lab-tested and field-proven for seamless integration and maximum uptime; Backed by free lifetime 24/5 multi-lingual technical assistance

Hardware

Warranty	Lifetime
Number of Conductors	4 pair UTP
Cable Jacket Material	PVC - Polyvinyl Chloride
Fire Rating	CMG Rated (General Purpose)
Wiring Standard	TIA/EIA-568-B.1-2001 T568B

Performance

Cable Rating	CAT5e - 100 MHz
--------------	-----------------

Connector(s)

Connector A	1 - RJ-45
Connector B	1 - RJ-45

Environmental

Operating Temperature	-20 (-4°F) - 60 (140°F)
Storage Temperature	0 (32°F) - 30 (86°F)
Humidity	60%RH

Physical Characteristics

Color	Green
Wire Gauge	24 AWG
Conductor Type	Stranded Copper
Cable Length	10.0 ft [3.0 m]
Product Length	10.0 ft [3.0 m]

Product Width	0.5 in [1.2 cm]
Product Height	0.5 in [1.3 cm]
Weight of Product	3.7 oz [106.0 g]

Packaging Information

Package Quantity	1
Package Length	7.7 in [19.5 cm]
Package Width	7.8 in [19.7 cm]
Package Height	1.0 in [2.5 cm]
Shipping (Package) Weight	3.9 oz [110.0 g]

What's in the Box

Included in Package	1 - 10 ft. Cat5e Patch Cable - Green
---------------------	--------------------------------------

Warranty Information

Warranty	Lifetime
----------	----------

****Product appearance and specifications are subject to change without notice.***