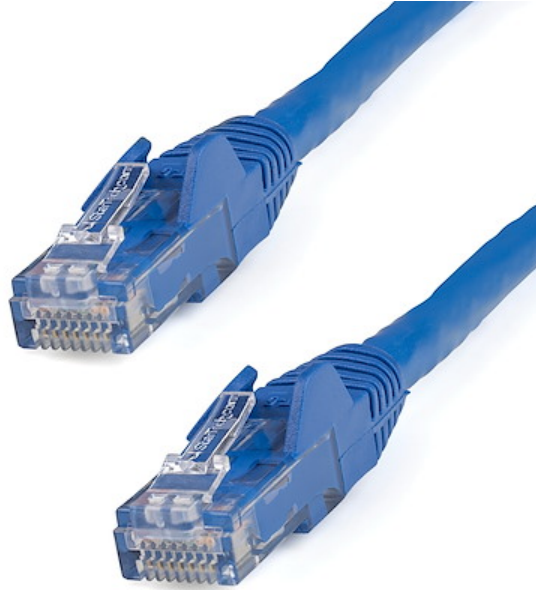


2m CAT6 Ethernet Cable - Blue CAT 6 Gigabit Ethernet Wire -650MHz 100W PoE RJ45 UTP Network/Patch Cord Snagless w/Strain Relief Fluke Tested/Wiring is UL Certified/TIA

Produkt ID: N6PATC2MBL



The N6PATC2MBL Cat 6 Patch Cable (2m) meets or exceeds all Category 6 cable specifications to ensure reliable Gigabit network connections, and features a durable blue PVC jacket that enables you to color code your network cable runs as needed.

To ensure long-lasting performance, this high quality Cat 6 patch cable features a snagless design that protects the RJ45 connector clips from damage and makes the cable less prone to snagging during installation. The cable also features molded PVC strain relief that prevents the RJ45 connector termination points from bending at sharp angles - reducing the risk of cable damage, which could decrease network performance.

Constructed of only top quality materials, this Cat 6 Patch Cord delivers reliable performance and is backed by our Lifetime Warranty.

StarTech.com Cat6 cables are manufactured using high-quality copper conductors. While many cable manufacturers offer a "cheaper" cable based on a copper-coated aluminum core, we make no compromises on quality to ensure you receive top value and performance for your network cable investment.

This Cat6 cable is constructed with 24 gauge copper wire, to support a broad range of Ethernet applications such as Power over Ethernet (PoE). Because we use a high quality copper wire, our cables easily sustain the power required for Power over Ethernet applications, whereas the inferior quality offered by copper-coated aluminum cables may be subject to insufficient power delivery, heat buildup, equipment damage and potentially, fire.

This Cat 6 patch cable offers high quality connectors comprised of 50-micron gold, to deliver optimum conductivity while eliminating signal loss due to oxidation or corrosion.

Certifikat, rapporter och kompatibilitet

Användning

- Framtagen för att användas med gigabit-nätverk
- Kopplar från hubb till distributionspanel
- Anslut en arbetsstation till ett vägguttag

Funktioner

- Skydd till RJ45-kontakter
- Tillverkad och testad med omsorg för att bakåtoverhörning (NEXT) ska ligga väl inom godkända gränser
- Högkvalitativ 0,25 mm² koppartråd
- ETL-godkänd
- Tillverkad av komponenter med toppkvalitet
- Gjuten dragavlastning hindrar att kabeln böjs i skarpa vinklar vid RJ45-kontakten, vilket i sin tur minskar påfrestningarna på kontaktens spets
- Färgade huvor så att man kan färgkoda olika avdelningar

Hårdvara

Garantipolicy	Lifetime
Antal ledare	4 pair UTP
Kontaktplätering	Guld
Kabelmanteltyp	PVC - Polyvinyl Chloride
Brandteknisk klass	CMG-klass (General Purpose)
Kabeltyp	Hakfri
Kabelstandard	TIA/EIA-568-B.1-2001 T568B

Prestanda	Kabelklassificering	CAT6 - 650 MHz
<hr/>		
Kontakt(er)	Connector A	RJ-45
	Connector B	RJ-45
<hr/>		
Utseende	Färg	Blå
	Tråddimension	24 AWG
	Ledningstyp	Tvinnad koppar
	Kabellängd	6.6 ft [2 m]
	Produktlängd	6.6 ft [2 m]
	Produktvikt	2.9 oz [83 g]
<hr/>		
Förpackning	Förpackningsantal	1
	Package Length	8.7 in [22 cm]
	Package Width	7.9 in [20 cm]
	Package Height	0.6 in [14 mm]
	Fraktvikt (förpackning)	3.3 oz [93 g]
<hr/>		
Vad det är i lådan	Ingår i paketet	2 m Blue Snagless Cat6 UTP Patch Cable - ETL Verified
<hr/>		

* Produkters utseende och specifikationer kan komma att ändras utan förvarning.

