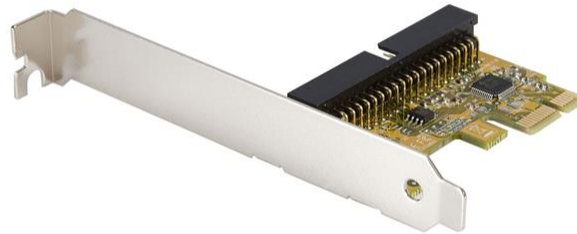


1 Port PCI Express IDE Controller Adapter Card

Product ID: PEX2IDE



This PCI Express IDE Controller Adapter Card provides a cost-effective way to use legacy drives with modern computers, by converting a PCI Express port into an IDE port.

Providing data burst transfer rates of up to 133MBps and support for PIO 0/1/2/3/4 and UDMA 33/66/100/133 operating modes, the IDE controller card offers an efficient way to add an IDE channel with support for two IDE drives on the same channel.

A complete dual profile solution, the PCI Express IDE controller card provides both standard and low profile brackets for adapting to slimline or small form factor system applications.

Certifications, Reports and Compatibility

Applications

- Add an additional IDE port to a computer system
- Replace a failed IDE port
- Add an IDE port for connecting legacy ATA devices such as old hard drives and tape drives

Features

- 2-channel IDE port supports two drives
- Supports UDMA 6 mode which supports transfer rates up to 133 MBps
- Supports ATA/ATAPI commands

- 48-bit LBA support
- Includes a low profile installation bracket

Hardware

Warranty	Lifetime
Ports	1
Interface	IDE
Bus Type	PCI Express
Card Type	Standard Profile (LP bracket incl.)
Chipset ID	JMicron - JMB368

Performance

LBA support	48-bit
-------------	--------

Connector(s)

Connector Type(s)	PCI Express x1
Internal Ports	IDE (40 Pin, EIDE/PATA)

Software

OS Compatibility	Windows 2000, XP, Vista, 7, 8, 8.1, 10 Windows Server 2008 R2, 2012, 2016, 2019
------------------	--

Special Notes / Requirements

System and Cable Requirements	Available PCI Express expansion slot
-------------------------------	--------------------------------------

Physical Characteristics

Material	Steel
Weight of Product	4.2 oz [120 g]

Packaging Information

Package Length	9.1 in [23 cm]
Package Width	6.5 in [16.5 cm]



Package Height 1.7 in [42 mm]

Shipping (Package) Weight 7.1 oz [200 g]

What's in the Box

Included in Package	PCI Express IDE Controller Card
	IDE Cable
	Instruction Manual
	Low Profile Bracket

****Product appearance and specifications are subject to change without notice.***

