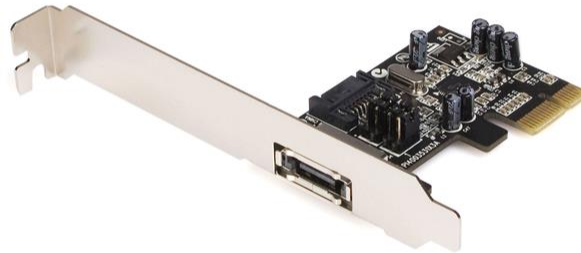


## 1 Port PCI Express eSATA II Controller Card

**Product ID:** PEXESATA1



This eSATA Controller Card turns a PCI Express (1x) slot into an external SATA port, to provide a quick and hassle-free external storage solution.

Supporting SATA 300 (SATA II) hard drives (backward compatible with SATA /150) and data transfer rates of up to 3Gbps, this PCI Express eSATA Controller Card is the perfect solution for upgrading existing eSATA capability, or simply adding an external SATA port to a PC desktop computer.

Using a native PCI Express single chipset, the controller card provides enhanced compatibility, reliability and performance for your external storage needs. The controller card also features Port Multiplier support with command based switching for connecting multiple external hard drives to a host computer through one eSATA connection.

The PCI Express eSATA Controller Card also features an internal SATA port, which could be used for a conventional (internal) SATA drive installation. Please note that the internal SATA port can not be used at the same time as the external SATA port.

## Certifications, Reports and Compatibility

### Applications

- Provides you with one external eSATA port for connecting SATA devices such as external hard drive storage

### Features

- Selectable 1 external eSATA or 1 internal SATA port
- Support for FIS-based Port Multiplier technology

- Large capacity drive support with 48-bit Logical Block Addressing (LBA)
- Drive Hot-Plugging support
- Support for Native Command Queuing (NCQ)
- Fully compliant with the Serial ATA 1.0 specifications with support for transfer rates up to 3.0Gbps
- Uses native PCI Express single chipset
- Full/Low Profile installation brackets included

---

#### Hardware

Warranty	Lifetime
Ports	1
Interface	eSATA
Bus Type	PCI Express
Card Type	Standard Profile (LP bracket incl.)
Chipset ID	Silicon Image - SiI3531

---

#### Performance

Maximum Data Transfer Rate	3 Gbps
Type and Rate	SATA 3 Gbit/s (SATA II)
Port Multiplier	Yes
Hardware Raid Supported	No
Supported RAID Modes	JBOD - (Just a Bunch of Disks)

---

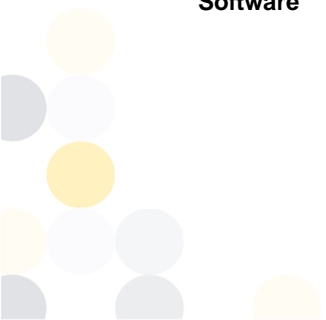
#### Connector(s)

Connector Type(s)	PCI Express x1
Internal Ports	SATA (7 pin, Data)
External Ports	eSATA (7 pin, Data)

---

#### Software

OS Compatibility	Windows 2000, XP, Vista, 7, 8, 8.1 Windows Server 2003, 2008 R2, 2012
------------------	--



Linux 2.6.x to 4.4.x <i>LTS Versions only</i>

---

**Physical Characteristics**

Product Length	4.7 in [12 cm]
Product Width	2.8 in [70 mm]
Product Height	0.8 in [20 mm]
Weight of Product	1.3 oz [37 g]

---

**Packaging Information**

Package Quantity	1
Package Length	6.9 in [17.5 cm]
Package Width	5.5 in [14 cm]
Package Height	1.2 in [30 mm]
Shipping (Package) Weight	4.9 oz [140 g]

---

**What's in the Box**

Included in Package	Driver CD
	Instruction Manual
	Low Profile Bracket
	eSATA PCI Express Card
	SATA Cable

---

***\*Product appearance and specifications are subject to change without notice.***

