

2.5in Silver USB 2.0 External Hard Drive Enclosure for SATA HDD

Product ID: SAT2510U2



This USB to SATA External Hard Drive Enclosure transforms virtually any 2.5in SATA (SATA, SATA II, SATA III) laptop hard drive or SSD into the perfect portable storage solution! Ideal for storing digital multimedia and other demanding applications, the enclosure let's you get the most out of your hard drive, connecting to a host computer using USB 2.0 (also backward compatible with USB 1.1) for maximum data transfer rates of up to 480Mbps. Large capacity drives (tested with up to 1TB) can be used to greatly enhance your computer's storage/backup capabilities.

A truly portable solution, the external hard drive enclosure features lightweight, yet durable aluminum construction, as well as a small form factor design that fits perfectly into your pocket or notebook bag when not in use.

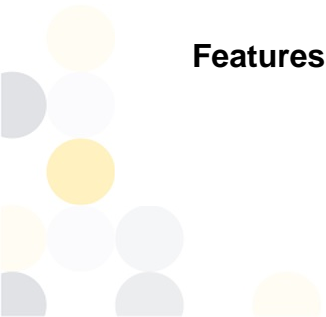
Plus, to eliminate the hassle of having to find a power outlet when you are ready to back up your data or load your stored files, the USB SATA hard drive enclosure requires no external power supply, as it is powered through its USB connection to the computer.

Certifications, Reports and Compatibility

Applications

- Create a fast, ultra portable external storage solution for laptops or netbooks
- Add-on storage to any USB enabled computer system
- Backup data to an external storage device
- Retrieve data from old laptop drive, or turn the unused drive into additional external storage space

Features



- Light-weight, durable aluminum construction
- High Speed USB 2.0 compliant host interface, with transfer rates up to 480 Mbps
- Power/activity LED
- Compatible with SATA revision 1/2/3 (1.5/3.0/6.0 Gbps) drives
- Supports 2.5" form factor SATA hard drives (HDD) and solid state drives (SSD)
- Powered directly from the USB ports
- Compact, portable design
- Includes a protective carrying pouch

Hardware

Warranty	2 Years
Fan(s)	No
Interface	USB 2.0
Bus Type	USB 2.0
Number of Drives	1
Drive Size	2.5in
Compatible Drive Types	SATA
Drive Installation	Fixed
Chipset ID	SunplusIT - SPIF225A

Performance

Maximum Data Transfer Rate	480Mbps
UASP Support	No
Hardware Raid Supported	No
Max Drive Capacity	Currently tested with up to 1TB 5400 RPM hard drives

Connector(s)

Connector Type(s)	USB Mini-B (5 pin)
-------------------	--------------------

Software



OS Compatibility	OS independent; No software or drivers required
------------------	---

Indicators

LED Indicators	Green: Power / Red: Drive Activity
----------------	------------------------------------

Power

Power Source	Not Included (not required for standard applications)
Input Voltage	5 DC

Environmental

Operating Temperature	0C to 60C (32F to 140F)
Storage Temperature	-20C to 70C (-4F to 158F)
Humidity	0 ~ 90% RH

Physical Characteristics

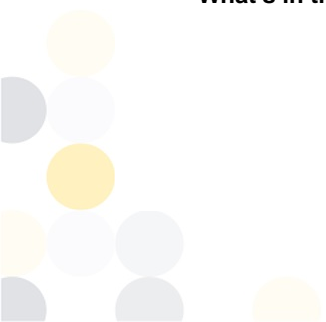
Color	Silver
Material	Aluminum
Max Drive Height	0.4 in [9.5 mm]
Product Length	4.7 in [12 cm]
Product Width	3.0 in [76.5 mm]
Product Height	0.5 in [13 mm]
Weight of Product	2.1 oz [60 g]

Packaging Information

Package Length	6.3 in [16 cm]
Package Width	5.0 in [12.8 cm]
Package Height	1.2 in [31 mm]
Shipping (Package) Weight	6.3 oz [178 g]

What's in the Box

Included in Package	2.5" SATA Enclosure
	USB 2.0 Y-Cable



Screw Kit

Mini Screwdriver

Protective Case

Instruction Manual

****Product appearance and specifications are subject to change without notice.***

